

Seven Seas[®] by ID[®]

With the size guide chart from Seven Seas by ID[®] you will find the right size straight from the beginning. The size guide chart is the essence of standard measuring methods. All measurements are in centimeters. The size specifications depend on correct washing und drying of the product.

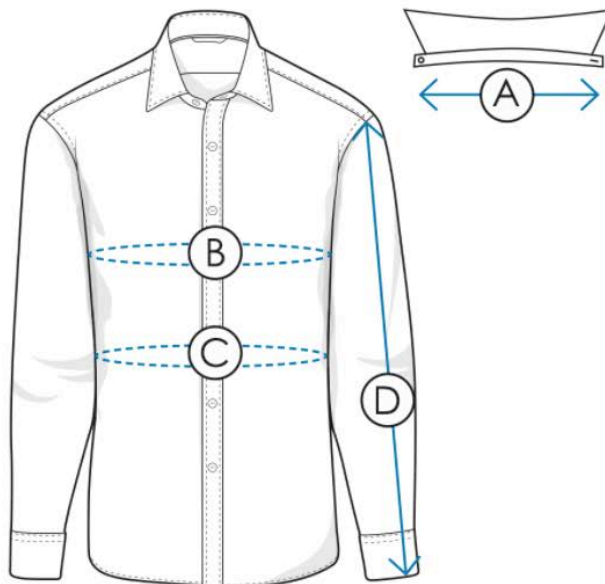
Men

A Collar width is to be measured at the collar from the middle of button to end of buttonhole.

B Chest width is to be measured at the widest point.

C Waist width is to be measured at the slimmest point.

D Long sleeve length is to be measured from shoulder to wrist.



Ladies

A Chest width is to be measured at the widest point.

B Waist width is to be measured at the slimmest point.

Men - Modern fit

Standard	S	M	L	XL	2XL	3XL	4XL	5XL
Collar	37/38	39/40	41/42	43/44	45/46	47/48	49/50	51/52
Chest	111	117	123	131	137	147	157	167
Waist	101	107	113	121	127	142	152	162
Long sleeve length	65	65	67	68	68	68	69	69

Men - slim fit

Standard	S	M	L	XL	2XL
Collar	37/38	39/40	41/42	43/44	45/46
Chest	102	108	114	120	126
Waist	91	97	103	109	115
Long sleeve length	66	66	66	68	68

Ladies - Modern fit

Standard	S	M	L	XL	2XL	3XL	4XL
Chest	90	96	102	108	114	120	126
Waist	80	86	92	98	104	110	116
Long sleeve length	61	62	63	64	65	66	67